

GENTOLOGY BARBERSHOP

THE BARBERSBOOK

CATALOGUE BY GENTOLOGY BARBERSHOP

GENTOLOGY PROPRIETARY



FAVORITE HAIRCUT



SCUMBAG BOOGIE

IT IS ALSO CALLED POMPADOUR WITH SIDE PART. BASICALLY, POMPADOUR STYLE IS HAIR SWEEPED UPWARDS FROM THE FACE AND WORN HIGH OVER THE FOREHEAD, AND SOMETIMES UPSWEPT AROUND THE SIDES AND BACK AS WELL. OFTEN COMBINED WITH LOW FADE OR DROP FADE. COMBINED WITH TAPER FADE OR JUST TAPER.



QUIFF

IT IS SIMILAR WITH POMPADOUR IN TERMS OF VOLUME. THE DIFFERENCE IS QUIFF IS OFTEN LONGER AND INCLUDES PLENTY OF HAIR AT THE FRONT OF THE HEAD, TEXTURIZED HAND-SWEPT, RECEDING INTO SHORTER HAIR AT THE BACK WHILE POMPADOUR IS OFTEN SHORTER AND IS NOT SWEEPED TO FRONT OF THE HEAD. QUIFF FEATURES MESSIER LOOK THAN POMPADOUR. OFTEN COMBINED WITH MID FADE.



CREWCUT

THE UPRIGHT HAIR ON THE TOP OF THE HEAD IS CUT RELATIVELY SHORT GRADUATED IN LENGTH FROM THE LONGEST HAIR THAT FORMS A SHORT POMP (POMPADOUR) AT THE FRONT HAIRLINE TO THE SHORTEST AT THE BACK OF THE CROWN. OFTEN COMBINED WITH MID FADE OR HIGH FADE.



FAUX HAWK

ALSO KNOWN AS THE FOHAWK. LONG HAIR AROUND THE CENTER OF THE HEAD, NOT COMBED, AND STANDING WITH THE DIRECTION UPWARD, A BIT FORWARD, AND A BIT CENTERED. ALWAYS COMBINED WITH DROP FADE. WITH THE FOHAWK FADE, YOU ARE GIVEN THE OPTION TO OCCASIONALLY CHANGE HAIRSTYLE. IF LONG FAUX HAWK IS TOO AGGRESSIVE FOR THE OFFICE, YOU CAN SIMPLY CHANGE YOUR STYLE TO A COMB OVER FADE, SLICK BACK, OR TEXTURED QUIFF.



EXECUTIVE CONTOUR

SWEPT SIDE PART WITH NO POMP, TAPERED DOWN TO MID-LENGTH OF THE SIDES AND BACK OF THE HEAD. OFTEN COMBINED WITH TAPER FADE OR JUST TAPER.

HAIRCUT STYLE

SHORTER



JAR HEAD



BUZZ CUT



FLAT TOP



SHORT



FRENCH CROP



CAESAR CUT



CREW CUT



SPIKE



FAUX HAWK



FLAT TOP BOOGIE



SCUMBAG BOOGIE

MEDIUM



CLASSIC HAIR CUT



SIDE PART



CENTER PART



COMB OVER



POMPADOUR

HAIRCUT STYLE

MEDIUM



SLICK BACK



JELLY ROLL



PSYCHOBILLY



EXECUTIVE CONTOUR



LONG



THE FLOP



LAYERED UNDERCUT



QUIFF



VANGUARD



TWO BLOCK



EMO



FRINGE



SHAGGY

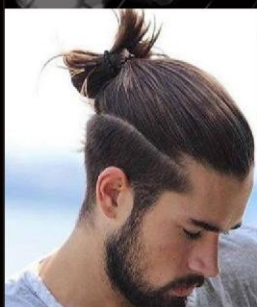


LAYERED

LONGER



MAN BUN



TOP KNOT



SWIPE SIDE



MULLET

SIDE & BACK

SIDE



LOW-FADE



MID-FADE



HIGH-FADE



NEAT-HIGH FADE



TEMPLE TAPER FADE



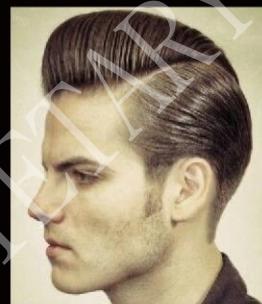
DROP-FADE



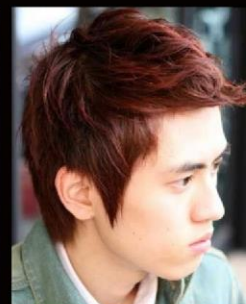
TAPER



LAYERED



LONG TRIM



SHAGGY

BACK



LOW-FADE



MID-FADE



HIGH-FADE



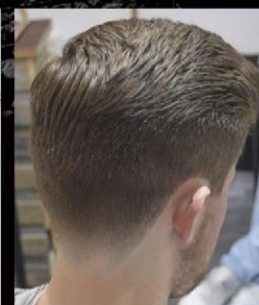
NEAT-HIGH FADE



TEMPLE TAPER FADE



DROP-FADE



TAPER



LAYERED



THE DUCKTAIL



SHAGGY

DETAIL



HARD PART



HAIR-TATTOO



SLICK BACK

SIDE PART



EXECUTIVE CONTOUR

POMPADOUR



POMPADOUR

WEDGE POM

PULLBACK POM

NECKLINE



BLOCKED

ROUNDED

TAPERED

TAPERED - NAPE

V-SHAPED

BEARD & MOUSTACHE



HANDLEBAR



WALRUS



CHEVRON



COWBOY



SCRUFFY



PENCIL



HORSESHOE



CHINSTRAP



GOATEE



STUBBLE

HOW IT WORKS :

1. FIND HAIRSTYLE FROM THIS CATALOGUE
2. GOOGLE THE HAIRSTYLE NAME TO SEE ALTERNATE PICTURE OF THE SELECTED HAIRSTYLE
3. CONSULT WITH THE BARBER TO MAKE SURE IT SUITS YOU

Man Skull type



Mongoloid



African



Caucasoid

